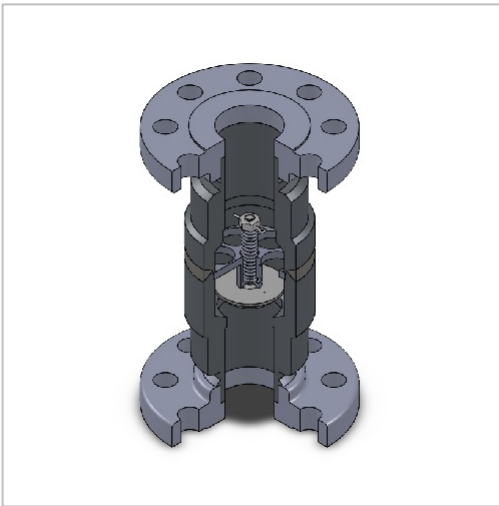


### APPLICATION

MGM Model 514 Excess Flow Check Valves are designed for use where flanged connections are required. They are made completely of carbon and stainless steel.

Model 514 Excess Flow Check Valves are double flanged and are equipped with either 150# or 300# raised face, forged flanges. Standard gaskets should be used on each end.

Model 514 MGM Excess Flow Check Valves can be installed in any orientation with negligible effect on flow rate. Each valve will have the proper closing flow direction indicated by an arrow stamped into the body. As with all MGM excess flow check valves, the Model 514 is equipped with an orifice in the check mechanism to allow for pressure equalization and will reopen automatically after the repairs are made.



### FEATURES

- Designed to fit between 150 or 300 pound American Standard steel pipe flanges. Ring groove flanges can be furnished if required.
- Low temp A350 LF2 forged carbon steel flanges.
- Generous flow channels provide minimal pressure drops.
- Heavy duty steel construction will withstand temperatures from -50° F (-45° C) to +300° F (+148° C) and internal pressures up to 2,400 psig (165 barg).
- Complete stainless steel construction available for greater range of operating temperatures.

### FLOW RATINGS

The table on the following page shows the range of flow rates available for common fluids. Each size valve has several different spring options that can be used to vary the closing flow rate. Please contact MGM for assistance in choosing the proper spring for your specific application.

### PRODUCT CERTIFICATIONS



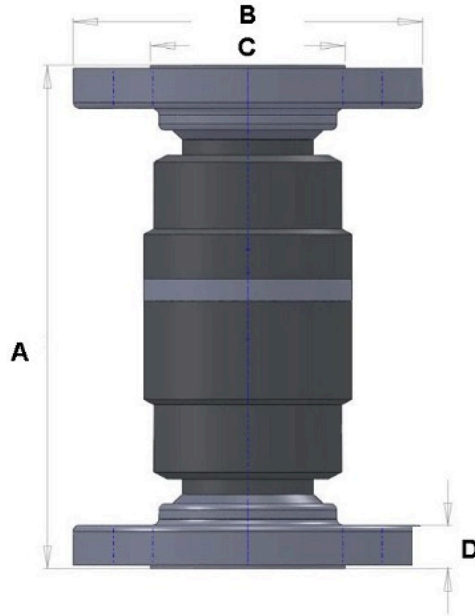
**CE Mark** Certified to Pressure  
Equipment Directive 2014/68/EU

### STANDARD MATERIALS

The table below lists standard material configuration for carbon steel and 316 stainless steel valves.\*

	Carbon Steel	316 Stainless
<i>Body</i>	<i>Low-temp Carbon</i>	<i>316-SS</i>
<i>Guide</i>	<i>Low-temp Carbon</i>	<i>316-SS</i>
<i>Spring</i>	--- 316- or 302-SS ---	---
<i>Poppet (incl. nut and cotter pin)</i>	--- 316-SS ---	---

\*Alternative materials available at additional cost



ORDERING INFORMATION							
Series Number	Pipe Size	Available Closing Flow Ranges - Approximate Flow in GPM Liquid*		Dimensions (inches)			
		Propane	Ammonia	A	B	C	D
514:E	0.75"	7-29	6-27	7.810	4.625	1.688	0.625
514:F	1.00"	11-53	10-48	9.000	4.875	2.000	0.688
514:H	1.50"	112	102	9.680	6.125	2.875	0.813
514:I	2.00"	98-354	89-320	10.188	6.500	3.625	0.875

*\*Contact MGM for flow rates of other fluids*